

Figure 1. Fine-grained subophitic basalt fragment, composed of larger crystals of clinopyroxene (gray), with laths of plagioclase feldspar (white), and euhedral crystals of ilmenite (gray). A fine-grained intergranular mesostasis occurs in the central part of the specimen. Fragment 301,1; plane polarized light; scale bar 0.1 mm.

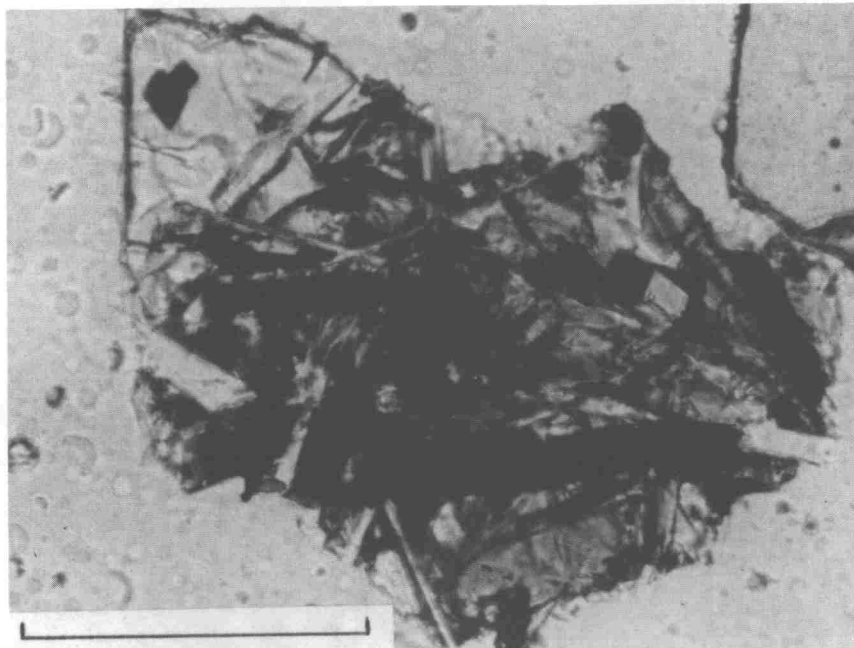


Figure 2. Fine-grained subophitic basalt fragment consisting of clinopyroxene (gray) with laths of ilmenite (black) and plagioclase (white). A large olivine crystal (upper left, clear) contains a smaller euhedral opaque grain, probably Cr-spinel. Fragment 318,268; plane polarized light; scale bar 0.1 mm.

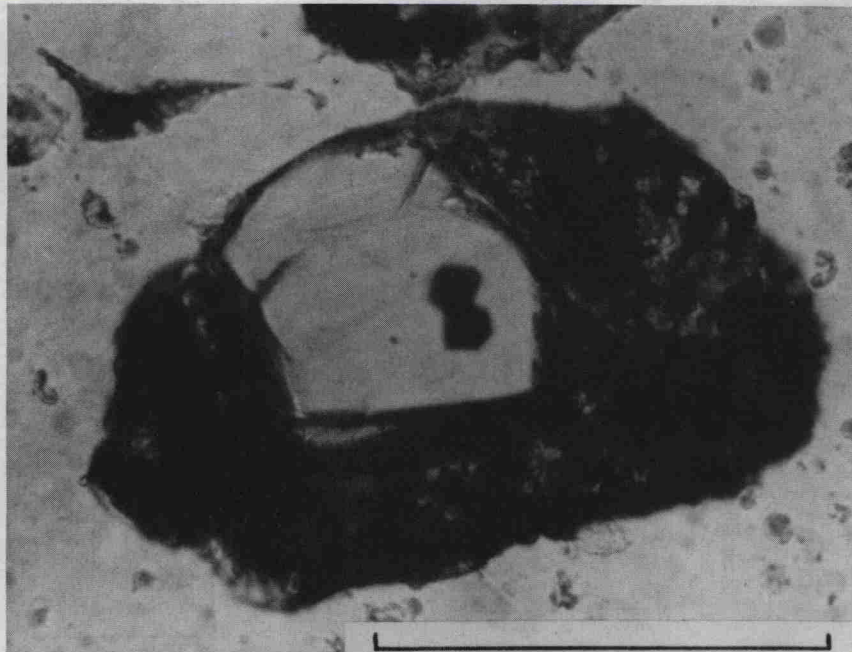


Figure 3. Very fine-grained olivine microporphyry, containing an olivine microphenocryst (clear) in a dark microcrystalline matrix composed of pyroxene, opaques, and possibly some plagioclase. The two euhedral opaque grains in the olivine crystal are probably Cr-spinel. Fragment 318,372; plane polarized light; scale bar 0.1 mm.

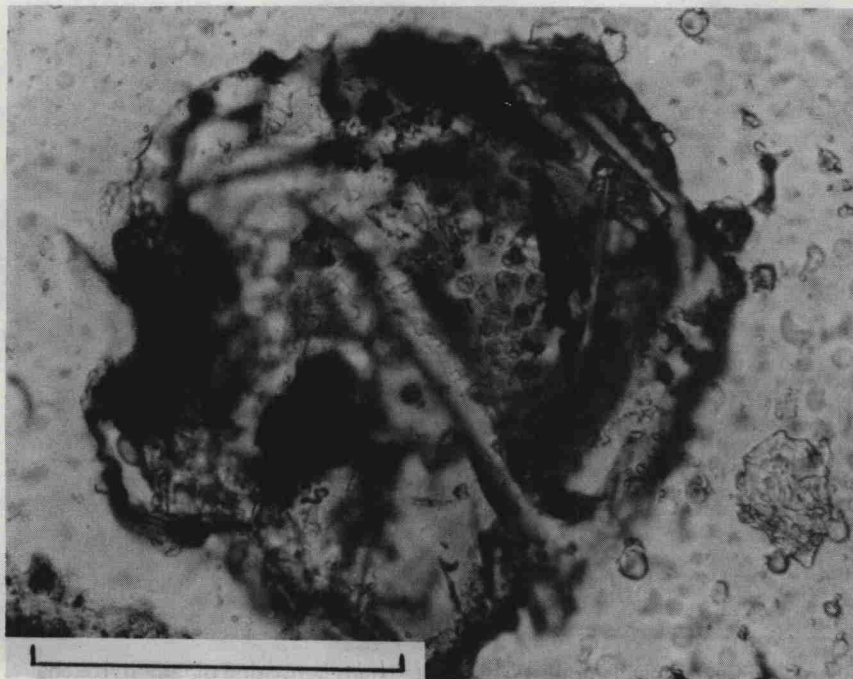


Figure 4. Fine-grained basalt fragment containing small blebs of apparently immiscible glass (gray) associated with plagioclase and a light matrix. Fragment 318,229; plane polarized light; scale bar 0.1 mm.